

Topics Addressed

- Educational Policy, Procedures, and Initiatives
- Florida's Communication Plan
- Specially Designed Instruction
- Instructional/Teaching Strategies
- Assistive and Instructional Technologies
- Accessible Instructional Materials
- Evaluations and Assessments
- Family Involvement
- Florida State Performance Plan (SPP) Indicators
 - SPP 1 - Graduation Rate
 - SPP 3 - Performance on Statewide Assessments
 - SPP 5 - Least Restrictive Environment (ages 6-21)
 - SPP 6 - Least Restrictive Environment (ages 3-5)
 - SPP 7 - PreSchool Outcomes
 - SPP 12 - Part C to Part B Transition
 - SPP 14 - Postsecondary Outcomes



Contact Us

	RMTC-D/HH
	1-800-356-6731
	207 San Marco Avenue Saint Augustine, FL 32084
	rmtcdhh.org
	info@rmtcdhh.org
	facebook.com/rmtcdhh
	twitter.com/rmtcdhh

Visit our website to download the current training catalog or view upcoming events at
rmtcdhh.org

or Access the Center's Free-Loan Media Library:
<http://dhh.materials.florida-ese.org/>

This document was developed by the Resource Materials and Technology Center for the Deaf/Hard of Hearing, a special project funded by the State of Florida, Department of Education, Division of Public Schools and Community Education, Bureau of Exceptional Education and Student Services through federal assistance under the Individuals with Disabilities Education Act (IDEA), Part B and IDEA Part B Trust funds and through a grant agreement with the Florida School for the Deaf and the Blind.

RMTC-D/HH



Resource Materials and Technology Center
for the Deaf/Hard of Hearing

Working Collaboratively
to Support the
Education of Students
who are Deaf/Hard of
Hearing in Florida

rmtcdhh.org
1-800-356-6731

207 San Marco Avenue
Saint Augustine, FL 32084

Located on the campus of the Florida School for the Deaf and the Blind

About Us

Established in 1978 by the Florida Legislature, the Resource Materials and Technology Center for the Deaf/Hard of Hearing (RMTC-D/HH) is a statewide discretionary project of the Florida Department of Education, Bureau of Exceptional Education and Student Services (BEESS). RMTC-D/HH functions as a statewide specialized center within the Florida Diagnostic & Learning Resource System (FDLRS) network. RMTC-D/HH serves as the coordinating unit for accessible materials including captioned and signed videos, professional development books, and other reference materials. In addition, RMTC-D/HH staff provide on-site training and technical assistance to all school districts, families, and other professionals working with students who are deaf/hard of hearing.

Services from RMTC-D/HH are provided by request and at no charge to the school, district, or organization.



RMTC-D/HH plans and works collaboratively with school districts statewide, agencies, associations, and other state and federal discretionary projects to positively influence student outcomes and graduation rates with an emphasis on college, career, and life-readiness.

RMTC-D/HH Activities

Training & Professional Development

- Working with the Experts: Deaf/Hard of Hearing (WWE: D/HH)
- Language Reading Connection: Deaf/Hard of Hearing (LRC: D/HH)
- How to Screen for Usher Syndrome
- Professional Learning Communities
- Regional, District, and In-Classroom Trainings
- TALive! (Monthly)
- Webinars
- Online Training Modules
- Communities of Practice

Materials

- Tech Notes and E-Newsletters
- RMTC-D/HH Website
- D/HH Program Review and Reports
- Upcoming Events Calendar

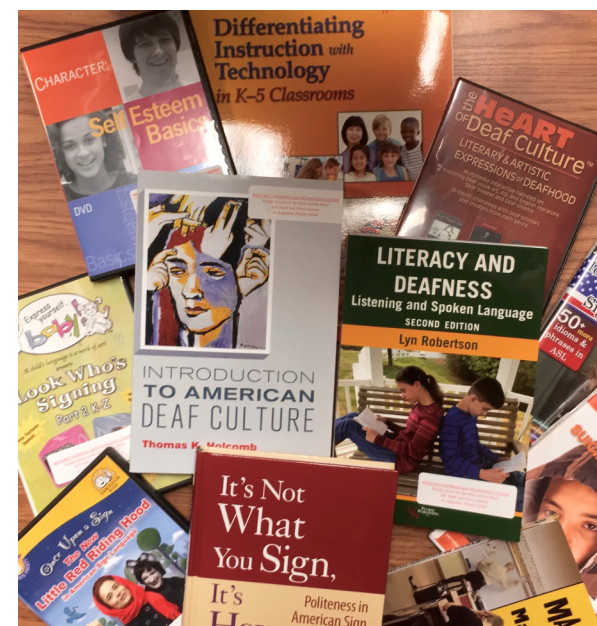


RMTC-D/HH Activities

Services

- Free-Loan Media and Materials Library*
- On-site Technical Support
- On-site Observation and Consultation
- Technical Assistance via Telephone/Email/Virtual Office
- Information and Referral Services
- Language Evaluations/Assessments**

**RMTC-D/HH may assist districts with limited capacity in the completion of certain student assessments and evaluations needed to develop and implement IEPs, with priority given to districts identified as small and rural.



*** To borrow materials go to:
dhh.materials.florida-es.org**